

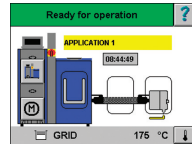
## 12 and 25 liter melters

### VersaBlue melters:

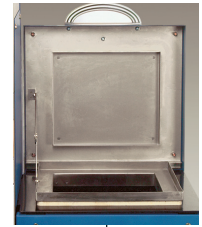
- Install quickly and easily
- Provide easy day-to-day operation
- Simplify routine maintenance
- Maximize uptime
- Serve a broad range of industries

Nordson VersaBlue melters are designed for precise, demanding hot melt adhesive applications. A choice of metering spur-gear pumps with variable-speed AC motors satisfies a wide range of manufacturing requirements. A grid and reservoir tank design reduces adhesive degradation while maximizing adhesive throughput. A powerful industrial PC provides full control of the adhesive system via a touch-screen interface.

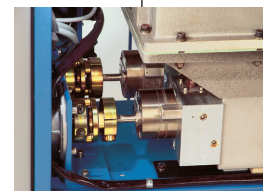
Graphical, touch-screen system control with status display of the tank, hose(s) and applicator(s)



Large, accessible tank opening allows easier filling and cleaning



Entry panels make access to melter components quick and easy



Pump shut-off valve and single-tool removal provide quick, easy pump replacement



Quick plug-in hose/gun pairs

Quick connect I-O & Profibus® plugs

**Specifications**

Type of System	Release-coated grid and reservoir Spur-gear pump with variable speed AC motor	
Number of Pumps	1 or 2	
Maximum Pump Rate <sup>1 &amp; 3</sup>	1.4 to 82 kg/hr (3 to 181 lb/hr)	
Filter Type	Saturn® basket-style filter	
Maximum Working Hydraulic Pressure	85 bars/8.5 MPa (1230 psi)	
Operating Temperature Range <sup>4</sup>	40 to 230°C (100 to 450°F)	
Ambient Temperature Range	0 to 40°C (32 to 104°F)	
Temperature Control Stability	±1°C (2°F)	
Electrical Service <sup>5</sup>	240 VAC 1 phase 50/60 Hz <sup>6</sup> 200 VAC 3 phase 50/60 Hz <sup>7</sup> 200 to 240 VAC 3 phase 50/60 Hz 380 to 415 VAC-Y (3 phase N/PE) 50/60 Hz 400 VAC 3 phase 50/60 Hz <sup>7</sup> 480 VAC 3 phase 50/60 Hz <sup>7</sup>	
<b>Maximum System Power Capacity</b>	<b>12 liter</b>	<b>25 liter</b>
2 hoses/applicators	6960 watts	9610 watts
4 hoses/applicators	10560 watts	13210 watts
6 hoses/applicators	14160 watts	16810 watts
Input/Output Capability Standard	7 outputs; 10 inputs	
Maximum Pressure Sensors	2	
Melter Dimensions (W x H x D)	885 x 1382 x 582 mm (34.8 x 54.4 x 22.9 in)	
Installation Dimensions (W x H x D)	1445 x 1382 x 831 mm (56.9 x 54.4 x 32.7 in)	
Protection	IP54	

	VersaBlue 12	VersaBlue 25
Holding Capacity	12 L (732 in <sup>3</sup> ) 11.6 kg (25.6 lb)	25 L (1526 in <sup>3</sup> ) 24.3 kg (53.4 lb)
Throughput (per hour) <sup>1</sup>	18 kg (39.6 lb)	40 kg (88 lb)
Melt Rate (per hour) <sup>1</sup>	14 kg (30.8 lb)	25 kg (55 lb)
Weight (empty) <sup>2</sup>	190 kg (418 lb)	225 kg (495 lb)
Number of Applicators	2, 4 or 6	2, 4 or 6

<sup>1</sup> Actual rates will vary depending on adhesive type, application parameters and input voltage.  
<sup>2</sup> Weight depends on melter configuration.  
<sup>3</sup> Range given is for maximum pump rate of various pumps available.  
<sup>4</sup> High temperature unit available with operating range of 40 to 250°C (100 to 480°F).  
<sup>5</sup> Permitted deviation from rated line voltage is ±10%.  
<sup>6</sup> 12-liter melter only; there are hose/gun pair capacity restrictions.  
<sup>7</sup> With integrated transformer.

Casters optional.  
 Profibus and Ethernet I/P optional.  
 Profibus is a registered trademark of Profibus International



**For more information, speak with your Nordson representative or contact your Nordson regional office.**

**United States**  
 Duluth, Georgia  
 (800) 683-2314 **Phone**  
 (866) 667-3329 **Fax**

**Canada**  
 Markham, Ontario  
 (800) 463-3200 **Phone**  
 (905) 475-8821 **Fax**

**Europe**  
 Erkrath, Germany  
 (49) 211-9205-0 **Phone**  
 (49) 211-254658 **Fax**

**Japan**  
 Tokyo, Japan  
 (81) 3-5762-2700 **Phone**  
 (81) 3-5762-2701 **Fax**

**Asia/Australia/  
 Latin America**  
 Amherst, Ohio  
 (440) 985-4797 **Phone**  
 (440) 985-1096 **Fax**

