

VersaBlue[®] N Series

Adhesive Melters

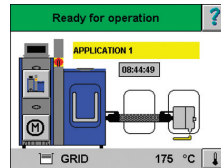
12, 25 and 50 liter melters

VersaBlue N series melters:

- Install quickly and easily
- Provide easy day-to-day operation
- Simplify routine maintenance
- Maximize uptime
- Serve a broad range of industries

Nordson VersaBlue N series melters are designed for precise, demanding hot melt adhesive applications. A choice of up to four single-stream or two dual-stream metering spur-gear pumps with variable-speed AC motors satisfies a wide range of manufacturing requirements. A grid and reservoir tank design reduces adhesive degradation while maximizing adhesive throughput. A powerful industrial PC provides full control of the adhesive system via a touch-screen interface.

Graphical, touch-screen system control with status display of the tank, hose(s) and applicator(s)



Large, accessible tank opening allows easier filling and cleaning



Entry panels make access to melter components quick and easy



Pump shut-off valve and single-tool removal provide quick, easy pump replacement

Nordson

VersaBlue® N Series 12, 25 and 50 Adhesive Melters

Specifications

| | |
|--|--|
| Type of System | Release-coated grid and reservoir Spur-gear pump with variable AC motor |
| Number of Pumps | Up to 4 single stream or 2 dual stream |
| Maximum Pump Rate ^{1 & 2} | 1.4 to 48.0 kg/hr (3 to 105.6 lb/hr) |
| Filter Type | Saturn® basket-style filter |
| Maximum Working Hydraulic Pressure | 85 bars/8.5 MPa (1230 psi) |
| Operating Temperature Range | 40 to 230°C (100 to 450°F) |
| Ambient Temperature Range | 0 to 40°C (32 to 104°F) |
| Temperature Control Stability | ±1°C (2°F) |
| Electrical Service ⁴ | 200 VAC 3 phase 50/60 Hz ⁵ 200 to 240 VAC 3 phase 50/60 Hz 380 to 415 VAC-Y (3 phase N/PE) 50/60 Hz 400 VAC 3 phase 50/60 Hz ⁵ 480 VAC 3 phase 50/60 Hz ⁵ |
| Input/Output Capability Standard | 9 outputs; 13 inputs |
| Maximum Pressure Sensors ⁶ | 4 internal |
| Melter Dimensions (W x H x D) | 1000 x 1382 x 782 mm (39.4 x 54.4 x 30.8 in) |
| Installation Dimensions (W x H x D) | 2090 x 1661 x 1031 mm (82.3 x 65.4 x 40.6 in) |
| Protection | IP54 |

| | VersaBlue 12 N | VersaBlue 25 N | VersaBlue 50 N |
|--|--|---|--|
| Holding Capacity | 12 L (732 in ³) 11.4 kg (25.6 lb) | 25 L (1526 in ³) 23.8 kg (52.5 lb) | 50 L (3051 in ³) 47.5 kg (104.7 lb) |
| Throughput (per hour)¹ | 18 kg (39.6 lb) | 37 kg (81.6 lb) | 75 kg (165.4 lb) |
| Melt Rate (per hour)¹ | 12 kg (26.5 lb) | 25 kg (55 lb) | 50 kg (110.2 lb) |
| Weight (empty)³ | 225 kg (496 lb) | 250 kg (551 lb) | 275 kg (606 lb) |
| Number of Applicators | 2, 4 or 6 | 2, 4 or 6 | 2, 4 or 6 |
| Maximum System Power Capacity | | | |
| 2 hoses/applicators | 9650 watts | 10280 watts | 15605 watts |
| 4 hoses/applicators | 13250 watts | 13880 watts | 19205 watts |
| 6 hoses/applicators | 16850 watts | 17480 watts | 22805 watts |

¹Actual rates will vary depending on adhesive type, application parameters and input voltage.

²Range given is for maximum pump rate of various pumps available.

³Weight depends on melter configuration.

⁴Permitted deviation from rated line voltage is ±10%.

⁵With integrated transformer.

⁶Up to 8 external sensors optional.

Casters optional. Profibus, ControlNet® and Ethernet I/P optional.



Profibus is a registered trademark of Profibus International

ControlNet is a registered trademark of Rockwell Automation, Inc.



Quick plug-in hose/gun pairs

Quick connect I-O & Profibus® plugs

For more information, speak with your Nordson representative or contact your Nordson regional office.

United States

Duluth, Georgia
(800) 683-2314 **Phone**
(866) 667-3329 **Fax**

Europe

Lüneburg, Germany
(49) 4131-894-0 **Phone**
(49) 4131-894-149 **Fax**

Japan

Tokyo, Japan
(81) 3-5762-2700 **Phone**
(81) 3-5762-2701 **Fax**

Asia/Australia/ Latin America

Amherst, Ohio
(440) 985-4496 **Phone**
(440) 985-1096 **Fax**

Find us on:



NWL-14-5846
Reissued 3/14
© 2004, 2014 Nordson Corporation
All Rights Reserved.
Printed in U.S.A.
Nordson reserves the right to make design changes between printings.