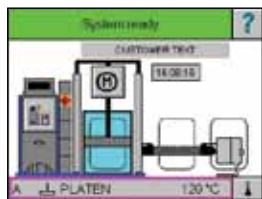


VersaDrum[®] Bulk Melters with Piston Pump

200-liter or 55-gallon drum melters

VersaDrum melters:

- Simplify installation and set-up
- Provide easy day-to-day operation
- Offer production flexibility
- Protect adhesive integrity



Graphical, touch-screen control system provides visibility and monitoring of all operations and status conditions

Single-side access for controls and drum changes



Air-operated, double-acting, reciprocating piston pump with 42:1 hydraulic to air ratio is especially suited for high viscosity materials

Manual or automatic aeration systems

Adjustable drum clamp for accurate positioning of metal or fiber drums

Nordson[®] VersaDrum bulk melters are designed for precise demanding hot melt adhesive application from 200-liter or 55-gallon drums. These piston pump melters are customizable to accommodate a wide variety of adhesives and meet specific manufacturing requirements. VersaDrum piston pump melters can be configured for either standard pressure (1500 psi maximum) or high pressure (3000 psi maximum) systems.

A powerful industrial PC provides full control of the adhesive system via a touch-screen interface and displays messages, warnings, and indicators for every operator activity and machine status condition.

VersaDrum bulk melters only melt the top surface of adhesive allowing the remaining material in the drum to stay solid to reduce thermal stress and protect bonding characteristics.

For applications that require continuous operation, Nordson's automatic changeover system links two bulk melters together to eliminate the downtime associated with drum changes.



VersaDrum® Bulk Melters with Piston Pump

200-liter or 55-gallon drum melters



Up to six additional temperature channels for control of spray guns, heaters, etc. (two shown here)



Modular, non-stick axial, finned and smooth melt platens for quick change and easy clean-up

Specifications

Type of System	Piston pumps
Drum Diameter	571 mm (22.5 in) or 567 mm (22.3 in)
Number of Hoses/Guns	2 standard (hydraulic & electrical) up to 6 additional (electrical only)
Maximum Working Hydraulic Pressure	200 bar (3000 psi)
Operating Temperature Range	40 to 230°C (100 to 450°F)
Ambient Temperature Range	-5 to 40°C (23 to 100°F)
Temperature Control Stability	±1°C (2°F)
Temperature Sensor	Ni 120
Electrical Service¹	200 VAC 3 phase delta 50/60 Hz 240 VAC 3 phase delta 50/60 Hz 400 VAC 3 phase Y 50/60 Hz 400 VAC 3 phase delta 50/60 Hz 480 VAC 3 phase delta 50/60 Hz 575 VAC 3 phase delta 50/60 Hz
Maximum System Power Capacity	39000 watts
Weight (empty)²	672 kg (1,482 lb)
Input/Output Capability Standard	6 Inputs 6 Outputs
Melter Dimensions (W x H x D)	1520 x 3010 x 740 mm (59.9 x 118.5 x 29.2 in)
Installation (service) Dimensions	2100 x 3010 x 1103 mm (82.7 x 118.5 x 43.5 in)
Protection	IP54

¹ Permitted deviation from rated line voltage is ±10%.

² Weight depends on melter configuration.



For more information, speak with your Nordson representative or contact your Nordson regional office.

United States

Duluth, Georgia
(800) 683-2314 **Phone**
(866) 667-3329 **Fax**

Canada

Markham, Ontario
(800) 463-3200 **Phone**
(905) 475-8821 **Fax**

Europe

Erkrath, Germany
(49) 211-9205-0 **Phone**
(49) 211-254658 **Fax**

Japan

Tokyo, Japan
(81) 3-5762-2700 **Phone**
(81) 3-5762-2701 **Fax**

Asia/Australia/ Latin America

Amherst, Ohio
(440) 985-4797 **Phone**
(440) 985-1096 **Fax**

PAL-10-5664
Issued 1/11
© 2010 Nordson Corporation
All Rights Reserved.
Printed in U.S.A.
Nordson reserves the right to make design changes between printings.